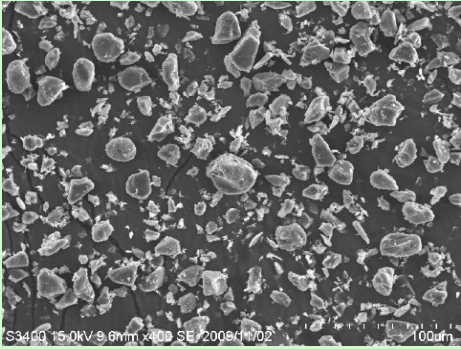
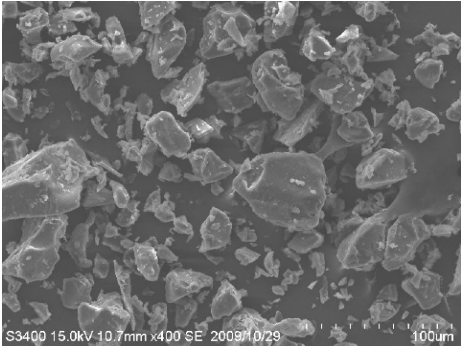
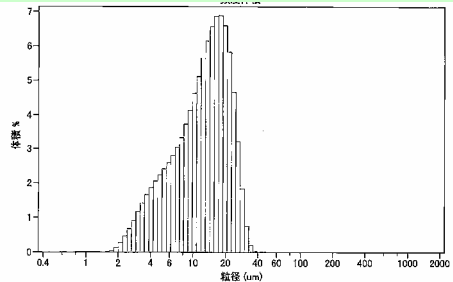
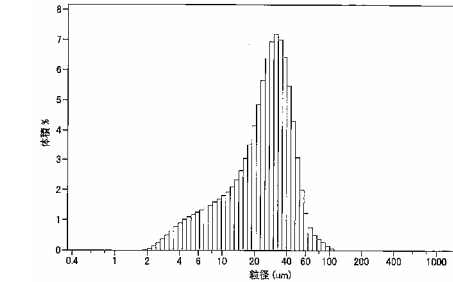

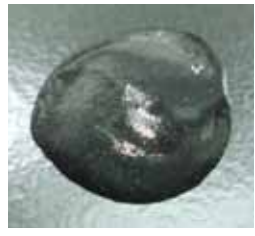


MAKIMOUSSE

Unique Thickener for Mousse Texture

INCI Name	Sodium Polyacrylate Starch
-----------	----------------------------

		MAKIMOUSSE 12	MAKIMOUSSE 25
Median Particle size (μ m)		12	25
SEM image			
Particle size distribution			
Appearance of Gel 1% in water		<p>Smooth & Shiny Gel</p> 	<p>Matte & Powdery Gel</p> 
Viscosity (Pas)* 1% in water	pH 4	22.2	28.6
	pH 7	23.1	27.6
	pH 10	21.0	28.0

*: Rotor No. M4, 20rpm

Formulations

O/W Mousse Foundation

No. DL/022

<Phase>	<Ingredient>	<%>
A	STEARIC ACID	2.50
A	GLYCERYL STEARATE SE	1.80
A	CETYL ALCOHOL	0.50
A	MINERAL OIL	9.90
B	ASI TiO2 CR-50	8.50
B	ASI RED R-516P	1.00
B	ASI YELLOW LL-100P	0.30
B	ASI BLACK BL-100P	0.20
B	CELLULOBEADS D-10	3.00
C	DE-IONIZED WATER	61.30
C	GLYCERIN	9.00
C	PRESERVATIVE	0.30
C	TRIETHANOLAMINE	1.20
C	MAKIMOUSSE 25	0.50
TOTAL :		100.00



ASL Mousse Sun Screen -SPF55-

No. DS/024

<Phase>	<Ingredient>	<%>
A	VEGETABLE SQUALANE	20.00
A	SHEA BUTTER	3.00
A	ETHYLHEXYL METHOXYCINNAMATE	10.00
B	ASL-1 MZ-500	15.00
B	ASL-1 TiO2 MT-500SA	6.00
B	CELLULOBEADS D-10	3.00
C	DE-IONIZED WATER	39.70
C	GLYCERIN	2.00
C	PRESERVATIVE	0.30
C	MAKIMOUSSE 25	1.00
TOTAL :		100.00



Mousse Jelly Eye Shadow

No. DO/007

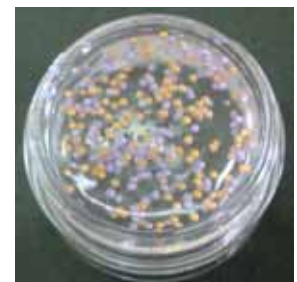
<Phase>	<Ingredient>	<%>
A	DE-IONIZED WATER	73.70
A	GLYCERIN	5.00
A	PRESERVATIVE	0.30
A	MAKIMOUSSE 25	1.00
B	OTS-2 TALC JA-46R	4.00
B	OTS-2 Pearls *	4.00
B	OTS-2 Glass Flakes	4.00
B	CELLULOBEADS D-10	3.00
C	DAITOSOL 4000SJT	5.00
TOTAL :		100.00



Sugarcapsule/Sugarbeads Gel

No. DO/006

<Phase>	<Ingredient>	<%>
(GEL BASE)		
A	MAKIMOUSSE 12	1.00
A	GLYCERIN	5.00
A	PRESERVATIVE	0.30
A	DE-IONIZED WATER	93.70
TOTAL :		100.00
(FINAL COMPOUND)		
B	GEL BASE	97.00
B	SUGARCAPSULE or SUGARBEADS	3.00
TOTAL :		100.00



OTS-2 Pearls *

OTS-2 TIMIRON MP-115
 OTS-2 TIMIRON Mp-29
 OTS-2 COLORONA CARMINE RED
 OTS-2 DUOCROM BG